

EAST RIDGE

DINER & STEAKHOUSE

Good Morning



Two Eggs & Toast - 3.65

Three Eggs & Toast -4.25

Two Eggs , Ham & toast - 6.25

Two Eggs ,

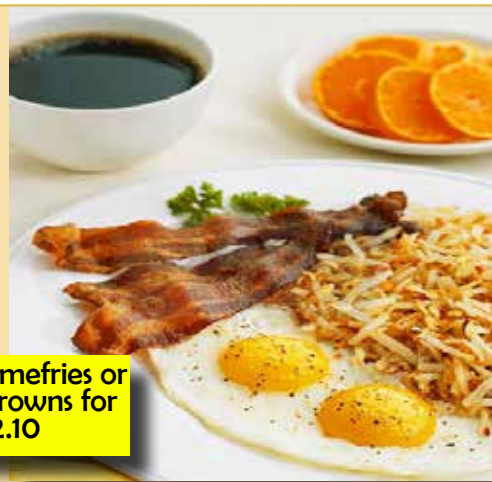
(4) Applewood Bacon & toast - 6.79

Two Eggs, 3 sausage links & toast -6.25

Scrambled Egg Beaters 5.55

Substitute a bagel, hard roll, raisin, texas, Italian, English muffin for .60

EGG ORDERS



Add homefries or hash browns for 2.10

GREAT OMELETTES

Ham & Cheese Omelette - 6.99

(Choice of American, swiss or cheddar Jack)

Bacon & Cheese Omelette - 6.99

(Choice of American, swiss or cheddar Jack)

Cheese Omelette - 5.99

(Choice of American, swiss or cheddar Jack)

Ham Omelette - 6.75

Mexican Omelette - 6.99

Filled with peppers, onions, tomatoes, beef chili and cheddar jack

Western Omelette - 6.55

Diced ham and onions and peppers.

Bacon, Mushroom & Cheese - 7.50

Feta Cheese Omelette(Greek)- 6.55

Spinach & Feta Cheese - 6.99

3 Cheese Omelette - 6.99

American, Swiss and mozzarella

Tomato, Mushroom &

Spinach Omelette -7.50

Broccoli and Cheddar Jack -7.59

Italian Omelette - 7.35

Stuffed with mushrooms, sausage, cheese and tomato

Eastern Omelette - 6.35

Filled with diced ham.

Artichoke Omelette - 6.99

Irish Omelette -6.99

Stuffed with with corned beef hash and Swiss cheese.

Meat Lover Omelette -7.89

A meat lover's delight. Bacon, pork sausage, ham and American cheese.

Vegetable Omelette -7.59

Onions, peppers, tomatoes, mushrooms and made w/ Eggbeaters and dry wheat toast

TWO BY THREE

A hearty breakfast of two eggs, two pancakes and your choice of two bacon or two sausage links -6.99

With French toast instead of cakes -7.50

With Waffle instead of Cakes -8.35



FRENCH TOAST

Your Choice of Texas, white, Italian or wheat bread grilled until golden brown.

Full stack - 6.75 Short stack - 5.99

Bahama Rum French Toast

Three slices of Thick Texas Bread Grilled in egg batter, topped with bananas and our homemade rum syrup and butter 7.25
Short Stack -5.99



All omelettes made with two eggs and are served with white, wheat or rye buttered toast.

Sub a Bagel, Texas, Italian, Raisin or muffin for .60

Add Homefries or Hashbrowns for 2.10

Any Omelette with Egg Beaters or Egg Whites add .80

(swiss, cheddar, mozzarella or American cheese for .70)

Any substitutions are extra

Belgian Malted Waffle

Plain	6.35
With fruit topping	7.75
With Ice Cream	6.99
Bananas Foster	8.45
With vanilla Ice cream and sliced Bananas	



Buttermilk Pancakes

Three - 6.30 Two - 5.30

Caramel Banana pancakes - 6.79

Pecan Banana Pancakes - 6.95
Loaded with caramelized pecans and topped with fresh bananas.

Multigrain pancakes

A mix of 10 grains healthy and delicious!

Three - 6.99 Two - 5.79

Blueberry Stuffed Pancakes

Buttermilk pancakes stuffed with blueberries

Three - 6.99

Short stack of two - 6.35

Chocolate Chip Pancakes

A favorite at East Ridge loaded with real chocolate chips - 6.95 add banana for \$1

Chocolate Chip & Peanut Butter Pancakes - 6.95

FruitTopped Pancakes

Buttermilk pancakes with a choice of **Strawberry, Blueberry, Apple, Cherry, or Peach topping** & whipped cream Three - 7.45

Short stack of two - 6.35

Irish Benedict 2 poached eggs with sliced corned beef on an english muffin topped with Hollandaise sauce 6.89



Turkey Benedict 2 poached eggs with sliced turkey on an English muffin topped with Hollandaise sauce 6.89

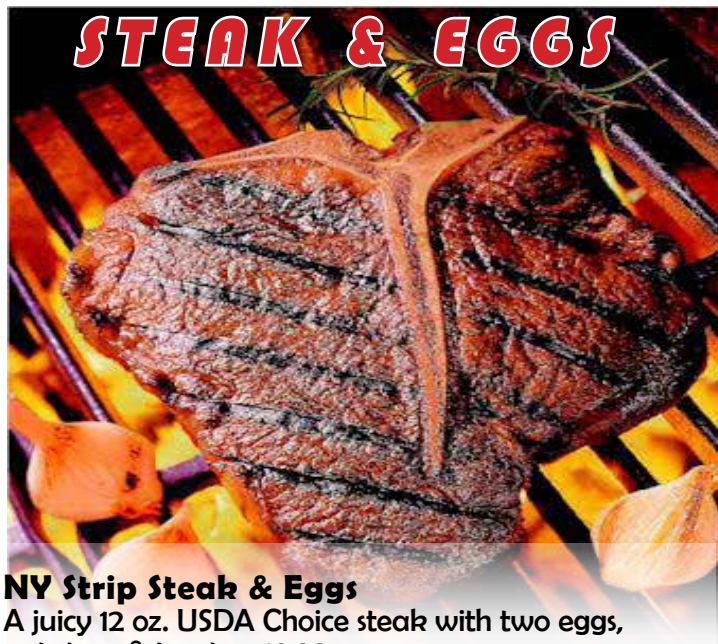
Sloppy Benedict 2 poached eggs, sliced bacon over hash browns and topped with Sausage gravy 6.89

Eggs Benedict 2 poached eggs with Canadian bacon on an English muffin topped with Hollandaise sauce 6.89

Eggs Florentine 2 poached eggs on an English muffin with spinach and Hollandaise sauce 6.89

Add Homefries or Hashbrowns for 2.10

STEAK & EGGS



NY Strip Steak & Eggs

A juicy 12 oz. USDA Choice steak with two eggs, potatoes & toast - 18.99

Porterhouse steak & Eggs

16 oz. porterhouse steak with two eggs, potatoes and toast - 24.99

Cattelmans Steak & Eggs

8 oz sirloin steak, two eggs, potatoes and toast - 11.99

The Magic Cowboy

8 oz sirloin with magic seasonings, with two eggs, potatoes and toast - 11.99

Pork Chops & Eggs

2 Huge Tender Chops 18 oz. total with two eggs, potatoes and toast - 13.99

Chicken Breast & Eggs

6 oz chicken breast Served with two eggs, potatoes and toast - 9.99

Ham Steak & Eggs

10 oz ham steak, two Eggs, potatoes & toast - 11.75

Country Fried Steak and Eggs

Breaded beef steak served with Potatoes, two eggs, toast and topped with sausage gravy 9.45



BEVERAGES

**Freshly Brewed
100% Colombian Coffee**
Regular or Decaf - 1.99 *Enjoy a bottomless cup!*

Thick Milk shakes
Made the old fashion way
with real ice cream - 4.95

Hot chocolate -1.99

Pot of tea - 1.99

Iced Tea - 2.49 *free refills*

Soft drinks - 2.65 *one refill*

Milk(whole) -2.25

Chocolate milk - 2.45

Bottled Water -1.99

Herbal Tea -2.45

Lemonade -2.65

COLD JUICE

Orange, Apple, Grapefruit, Cranberry,
Tomato, V8 -2.65



Ridge Bagel Sandwich

Scrambled egg & cheese with
2 slices of applewood bacon
or sausage
4.69



KIDS

Kid's Pancake- One Egg two Pancakes, one
sausage or bacon - 4.99

Kid's Chocolate Chip- One Mikey Mouse chocolate
chip cake & two bacon or sausage - 4.99

Kid's French Toast- Two slices french toast, one Egg,
one sausage or bacon -4.99

----Dine In only please----

TUESDAYS ARE KIDS DAYS
Kids menu is only \$1 each with every
dinner entree purchase.

Breakfast Sides

Smoked Ham - 3.25
Four strips of applewood bacon - 3.60
Three sausage links - 3.25
Side of Canadian bacon -3.25
Hash Browns - 3.35
Home Fries - 3.35
Cereal - 3.99 with bananas 4.99
Sweet Roll 2.75
Muffin (Double Chocolate or Blueberry) -2.25

Toast

Bagel - 2.39
with cream cheese -2.99
Toast - 1.99
Hard Roll - Buttered or grilled - 2.15
Raisin or cinnamon toast -2.15
English Muffin - 2.15
Texas Toast - 2.15
Sourdough Toast -2.79
Italian toast -2.75

HEART HEALTHY



Scrambled Egg Beater 5.50
3 Egg Whites 4.50

Protein Special:
3 Egg whites and a fresh
chicken breast 8.95

Vegetable Omelette 7.59
Onions, peppers, tomatoes, mushrooms and made
w/ Eggbeaters

Hot Instant Oatmeal 4.50
With brown sugar
With Raisins 4.89

